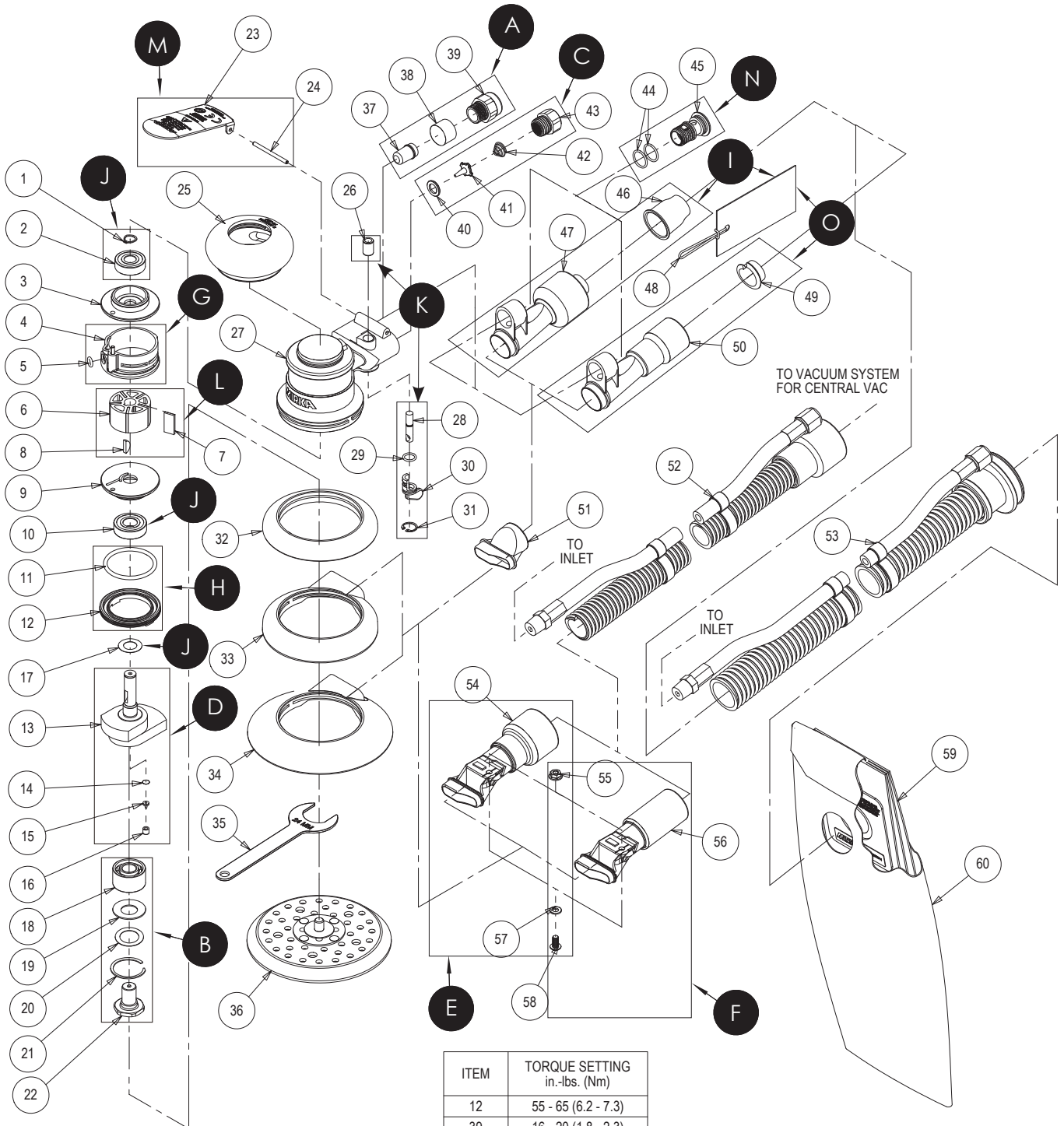


# Exploded view of ROS 125 mm & 150 mm

Updated 19.08.2021



ITEM	TORQUE SETTING in.-lbs. (Nm)
12	55 - 65 (6.2 - 7.3)
39	16 - 20 (1.8 - 2.3)
43	60 - 72 (6.8 - 8.1)
45	36 - 48 (4.0 - 5.4)
58	30 - 35 (3.4 - 3.9)

## ROS 125/150 mm Spare Part kits

**Note!** Repairs done by non-authorized repairer will breach the Mirka warranty.

Mirka Code	Item	Description	Kit	QTY	Part No
<b>8993017311</b>		<b>Muffler kit 12 000 rpm</b>			MPA0797
	37	Internal Muffler (for 12 000 rpm machines)	<b>A</b>	1	MPA0062
	38	Muffler Insert (for 12 000 rpm machines)		1	MPA0068
	39	Muffler Housing		1	MPA0166
<b>MIE6536311</b>		<b>Spindle Bearing Dual Seal kit</b>			
	18	Double Row Bearing	<b>B</b>	1	
	19	Dual Seal		1	
	20	Washer		1	
	21	Retaining Ring		1	
	22	Spindle		1	
<b>8993018811</b>		<b>Air Inlet kit</b>			
	40	Seat	<b>C</b>	1	MPA0009
	41	Valve		1	MPA0007
	42	Valve Spring		1	MPA0014
	43	Inlet Bushing		1	MPA0013
					MPA2189
<b>8993011811</b>		<b>Shaft Balancer 125 mm/2,5 mm kit</b>			MPA2189
	13	Shaft Balancer 125/2.5 mm (3/32 In.) Orbit Airshield™	<b>D</b>	1	MPB0279
	14	Filter		1	MPA0122
	15	Check Valve		1	MPA0121
	16	Retainer		1	MPA0120
					MPA2187
<b>8993013911</b>		<b>Shaft Balancer 125 mm/5,0 mm kit</b>			MPA2187
	13	Shaft Balancer 125/5 mm (3/16 In.) Orbit Airshield™	<b>D</b>	1	MPB0277
	14	Filter		1	MPA0122
	15	Check Valve		1	MPA0121
	16	Retainer		1	MPA0120
					MPA3231
8993015411		<b>Shaft Balancer 125 mm/8,0 mm kit</b>			MPA3231
	13	Shaft Balancer 125/8 mm (3/16 In.) Orbit Airshield™	<b>D</b>	1	MPB0348
	14	Filter		1	MPA0122
	15	Check Valve		1	MPA0121
	16	Retainer		1	MPA0120
					MPA1670
<b>8993013711</b>		<b>Shaft Balancer 150 mm/2,5 kit</b>			MPA1670
	13	Shaft Balancer 150/2.5 mm (3/32 In.) Orbit Airshield™	<b>D</b>	1	MPB0280
	14	Filter		1	MPA0122
	15	Check Valve		1	MPA0121
	16	Retainer		1	MPA0120
					MPA0980
<b>8993010611</b>		<b>Shaft Balancer 150 mm/5,0 kit</b>			MPA0980
	13	Shaft Balancer 150/5 mm (3/16 In.) Orbit Airshield™	<b>D</b>	1	MPB0278
	14	Filter		1	MPA0122
	15	Check Valve		1	MPA0121
	16	Retainer		1	MPA0120
					MPA3232
8993014411		<b>Shaft Balancer 150 mm/8,0 kit</b>			MPA3232
	13	Shaft Balancer 150/8 mm (3/16 In.) Orbit Airshield™	<b>D</b>	1	MPB0334
	14	Filter		1	MPA0122
	15	Check Valve		1	MPA0121
	16	Retainer		1	MPA0120
					MPA0988
<b>8993006611</b>		<b>Swivel Fitting kit CV 28 mm</b>			MPA0988
	54	Swivel Exhaust assembly Supervac™ 28 mm (1 In.) (Standard For CV)	<b>E</b>	1	MPA0099
	55	Nut		1	MPA0048
	57	Washer		1	MPA0047
	58	Screw		1	MPA0769

## ROS 125/150 mm Spare Part kits

Mirka Code	Item	Description	Kit	QTY	Part No
<b>8993013611</b>		<b>Swivel Fitting kit CV 19 mm</b>		OPT.	MPA0987
	55	Nut		1	MPA0048
	56	Swivel Exhaust assembly Supervac™ 19 mm (¾ In.)(Optional For CV)	<b>F</b>	1	MPA0205
	57	Washer		1	MPA0047
	58	Screw		1	MPA0769
<b>8993009211</b>		<b>Cylinder and O-Ring kit</b>			MPA0994
	4	Cylinder Assembly	<b>G</b>	1	MPA0005
	5	O-Ring		1	MPA0042
<b>8993007911</b>		<b>Lock Ring and O-Ring kit</b>			MPA0993
	11	O-Ring	<b>H</b>	1	MPA0045
	12	Lock Ring		1	MPA0001
<b>8993011311</b>		<b>Swivel Fitting DB 28 mm kit (Standard For DB)</b>			MPA0932
	46	Hose Seal 28mm (1 In.)	<b>I</b>	1	MPA0778
	47	Swivel Exhaust Assembly 28 mm (1 In.) Hose Supervac™		1	MPA0410
	48	Hose Seal Tag 28mm (1 In.)		1	MPA0931
				MPA0799	
<b>8993019811</b>		<b>Endplate Bearing kit</b>			MPA0799
	1	Retaining Ring	<b>J</b>	1	MPA0040
	2	Bearing		1	MPA0021
	10	Bearing		1	MPA0019
	17	Front Bearing Dust Shield		1	MPA2541
				MPA0800	
<b>8993019011</b>		<b>Speed Valve kit</b>			MPA0800
	26	Sleeve	<b>K</b>	1	MPA0015
	28	Valve Stem Assembly		1	MPA0008
	29	O-Ring		1	MPA0043
	30	Speed Control		1	MPB0014
	31	Retaining Ring		1	MPA0039
				MPA0801	
<b>8993017711</b>		<b>Rotor, Vanes and Key kit</b>			MPA0801
	6	Rotor	<b>L</b>	1	MPB0005
	7	Vane		5	MPA0010
	8	Key		1	MPA0041
				MPA0984	
<b>8993010911</b>		<b>Lever kit 2,5 mm Orbit</b>			MPA0984
	23	Lever For 2,5 mm (3/32) Orbit 12 000 rpm machines	<b>M</b>	1	MPA1698
	24	Pin		1	MPA0031
				MPA0983	
<b>8993010811</b>		<b>Lever kit 5,0 mm Orbit</b>			MPA0983
	23	Lever For 5,0 mm (3/16 In) Orbit/12 000 rpm machines	<b>M</b>	1	MPA1699
	24	Pin		1	MPA0031
				MPA3233	
<b>8993012811</b>		<b>Lever kit 8,0 mm Orbit</b>			MPA3233
	23	Lever For 8,0 mm (3/16 In) Orbit/12 000 rpm machines	<b>M</b>	1	MPA2123
	24	Pin		1	MPA0031
				MPA2551	
<b>8993018911</b>		<b>Retainer+O-Ring kit For DB Machines</b>			MPA2551
	44	O-Ring	<b>N</b>	2	MPA0044
	45	Retainer DB		1	MPA0006
				MPA0858	
<b>8993011411</b>		<b>Swivel Fitting DB 19 mm kit (Optional for DB)</b>		OPT.	MPA0858
	48	Hose Seal Tag 19mm (¾ In.)	<b>O</b>	1	MPA0856
	49	Hose Seal 19mm (¾ In.)		1	MPA0854
	50	Swivel Exhaust Assembly 19 mm (¾ In.) Hose Supervac™		1	MPA0409

Separate spare parts on next page.

## ROS 125/150 mm Spare Parts

Mirka Code	Item	Description	Kit	QTY	Part No
	1	Retaining Ring	J	1	MPA0040
	2	Bearing	J	1	MPA0021
<b>8993009311</b>	3	<b>Rear Endplate</b>		1	MPB0017
	4	Cylinder Assembly	G	1	MPA0005
<b>8993008211</b>	5	<b>O-Ring</b>	G	1	MPA0042
	6	Rotor	L	1	MPB0005
	7	Vane	L	5	MPA0010
	8	Key	L	1	MPA0041
<b>8993009411</b>	9	<b>Front Endplate</b>		1	MPB0016
	10	Bearing	J	1	MPA0019
	11	O-Ring	H	1	MPA0045
	12	Lock Ring	H	1	MPA0001
	13	Shaft Balancer	D	1	
	14	Filter	D	1	MPA0122
	15	Check Valve	D	1	MPA0121
	16	Retainer	D	1	MPA0120
	17	Front Bearing Dust Shield	J	1	MPA2541
	18	Double Row Bearing	B	1	
	19	Dual Seal	B	1	
	20	Washer	B	1	
	21	Retaining Ring	B	1	
<b>8995603201</b>	22	<b>Spindle</b>	B	1	
	23	Lever (3/16 In) Orbit/12,000 rpm Machines	M	1	
	24	Pin	M	1	MPA0031
<b>8993013811</b>	25	<b>Grip 65 mm (2 1/2 In.)</b>		OPT.	MPA0288
<b>8993016011</b>	25	<b>Grip 70 mm (2 3/4 In.)</b>		OPT.	MPA0289
<b>8993013511</b>	25	<b>Grip 75 mm (3 In.) - (Standard)</b>		1	MPA0290
	26	Sleeve	K	1	MPA0015
<b>8993007511</b>	27	<b>Housing</b>		1	MPA0244
	28	Valve Stem Assembly	K	1	MPA0008
	29	O-Ring	K	1	MPA0043
	30	Speed Control	K	1	MPB0014
	31	Retaining Ring	K	1	MPA0039
<b>8993014011</b>	32	<b>Shroud 125/150 mm (5/6 In.) NV</b>		1	MPB0012
<b>8993006511</b>	33	<b>Shroud 125 mm (5 In.) Supervac™ Delta, TE, LP And Screen Abrasive Pads</b>		1	MPC0012
<b>8993010011</b>	34	<b>Shroud 150 mm (6 In.) Supervac™ Screen abrasive and LP pads</b>		1	MPC0073
<b>8995604121</b>	35	<b>Pad Wrench 24mm (supplied with each tool)</b>		1	
<b>8292605011</b>	36	<b>Backing Pad Net 150mm 5/16" Grip 48H Medium</b>		1	
<b>8292502011</b>	36	<b>Backing Pad Net 125mm 5/16" Grip 28H Medium</b>		1	
	37	Internal Muffler (for 12 000 rpm machines)	A	1	MPA0062
	38	Muffler Insert (for 12 000 rpm machines)	A	1	MPA0068
	39	Muffler Housing	A	1	MPA0166
	40	Seat	C	1	MPA0009
	41	Valve	C	1	MPA0007
	42	Valve Spring	C	1	MPA0014
	43	Inlet Bushing	C	1	MPA0013
	44	O-Ring	N	2	MPA0044
	45	Retainer DB	N	1	MPA0006

## ROS 125/150 mm Spare Parts

Mirka Code	Item	Description	Kit	QTY	Part No
	46	Hose Seal 28mm (1 In.)	I	1	MPA0778
	47	Swivel Exhaust Assembly 28 mm (1 In.) Hose Supervac™ (Standard for DB)	I	1	MPA0410
	48	Hose Seal Tag 19mm (3/4 In.)	O	1	MPA0856
	48	Hose Seal Tag 28mm (1 In.)	I	1	MPA0931
	49	Hose Seal 19mm (3/4 In.)	O	1	MPA0854
	50	Swivel Exhaust Assembly 19 mm (3/4 In.) Hose Supervac™ (Optional for DB)	O	1	MPA0409
<b>8993011511</b>	51	<b>Shroud Exhaust adapter Supervac™ (DB)</b>		1	MPC0108
<b>8993306711</b>	52	<b>Ø 19 mm (3/4 In.) Vacuum hose to Ø 19 mm (3/4 In.) x Ø 28 mm (1 In.)</b> Hose adapter coupling and airline assembly includes: MPA0200 Ø 19 mm (3/4 In.) x 1.5 M (5 Ft.) Vacuum Hose, MPB008819 mm (3/4 In.) Hose x 28 mm (1 In.) Hose Adapter, MPA0302 Ø 6.3 mm (1/4 In.) x 1.5 M (5 Ft.) Airline with fittings, MPA0301 bungee for Ø 6.3 mm (1/4 In.) Airline & Ø 19 mm (3/4 In.) Vacuum hose (5)		OPT.	MPA0300
8993039211	52	Ø 28 mm (1 In.) VAC hose to Ø 28 mm (1 In.) x Ø 38 mm (1 1/2 In.) Friction fit adapter and airline Assembly. (Optional) Incl.: MPA0034 Ø 28 mm (1 In.) x 1.8 M (6 Ft.) Vacuum hose, MPB0092 Ø 28 mm (1 In.) Hose thread x Ø 38 mm (1 1/2 In.) Friction fit adapter, MPA0033 Ø 6.3 mm (1/4 In.) x 1.8 M (6 Ft.) Airline with fittings, MPA0027 Bungee for Ø 6.3 mm (1/4 In.) Airline & Ø 28 mm (1 In.) Vac.Hose (5)		OPT.	MPA0392
<b>8993006711</b>	53	<b>Ø 28 mm (1 In.) Vacuum hose to Ø 28 mm (1 In.)</b> Double bag fitting and airline assembly. (Standard for DB) Incl.: MPA0034 Ø 28 mm (1 In.) x 1.8 m (6 Ft.) Vacuum hose, MPB0123 Ø 28 mm (1 In.) Hose to double bag vacuum fitting, MPA0033 Ø 6.3 mm (1/4 In.) x 1.8 M (6 Ft.) airline with fittings, MPA0027 Bungee for Ø 6.3 mm (1/4 In.) Airline & Ø 28 mm (1 In.) Vacuum Hose (5)		1	MPA0412
8993041111		Ø 19 mm (3/4 In.) Vacuum hose to Ø 19 mm (3/4 In.) Double bag fitting and airline assembly (Optional for DB) Incl.: MPA0200 Ø 19 mm (3/4 In.) x 1.5 m (5 Ft.) Vacuum Hose, MPB0133 Ø 19 mm (3/4 In.) hose to double bag vacuum fitting, MPA0302 Ø 6.3 mm (1/4 In.) x 1.5 M (5 Ft.) airline with fittings, MPA0301 bungee for Ø 6.3 mm (1/4 In.) Airline & Ø 19 mm (3/4 In.) Vacuum Hose (5)		OPT.	MPA0411
	54	Swivel Exhaust Assembly Supervac™ 28 mm (1 In.) (Standard For CV)	E	1	MPA0099
	55	Nut	E,F	1	MPA0048
	56	Swivel exhaust assembly Supervac™ 19 mm (3/4 In.) (Optional For CV)	F	1	MPA0205
	57	Washer	E,F	1	MPA0047
	58	Screw	E,F	1	MPA0769
<b>8993206511</b>	59	<b>Dustbag Paper</b>		1	MPA0465
<b>8993206011</b>	60	<b>Dustbag Nylon</b>		1	MPA0658